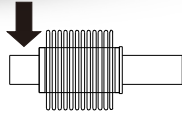
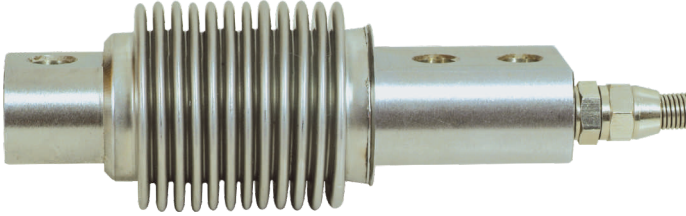


RM-H1 波纹管传感器



外型尺寸 Dimensions

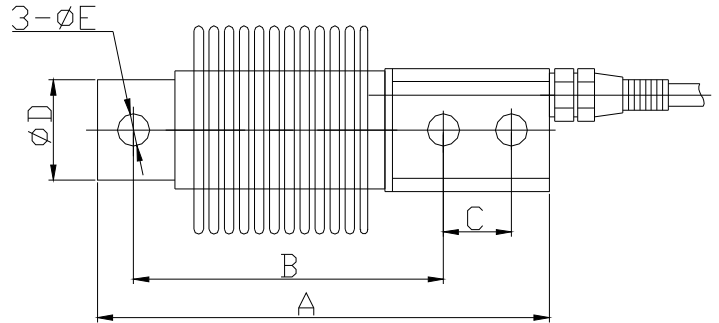
量程 kg	尺寸 mm				
	A	B	C	D	E
10 ~ 300	123	82	18	26	8.5
500 ~ 1000	210	133	40	36	13

产品特性 Product Characteristic

本产品具有较高的性能和稳定性,抗过载、偏载能力强;采用不锈钢、合金钢波纹管焊接密封,可承受拉压两种受力型式;适用于各类包装秤,配料秤,皮带秤等称重系统。

This production has advantage in stability, against excess loading and side loading. Sealed by stainless steel or Alloy steel cockles pipe, which can bear from press and pulling. It can be used in packing scale, batching scale, strap scale and other weighing system.

外形图 Appearance Picture



技术参数 Technical Parameter

载荷特性 Load Speciality	
额定载荷 Maximum Capacity	10 ~ 1000kg
准确度等级 Accuracy Class	C3
灵敏度 Sensitivity	2.0 ± 0.002% mv/v
非线性(含滞后) Nonlinearity(Included Hysteresis)	± 0.02% F.S
重复性 Repeatability	± 0.02% F.S
蠕变(30分钟) Creep(30 Min)	± 0.02% F.S
温度特性 Temperature Speciality	
温度对零点影响 Temperature Effect On Zero Balance	± 0.02% F.S/10℃
温度对灵敏度影响 Temperature Effect On Sensitivity	± 0.02% F.S/10℃
工作温度 Service Temperature Range	-30 ~ +70℃
温度补偿范围 Compensated Temperature Range	-20 ~ +60℃
机械特性 Machine Speciality	
安全承载 Safe Load Limit	150% F.S
极限承载 Lateral Load Limit	200% F.S

破坏载荷 Breaking Load	300% F.S
电气特性 Electric Speciality	
输入电阻 Input Resistance	400 ± 10Ω
输出电阻 Output Resistance	350 ± 2Ω
绝缘电阻 Insulation Resistance	≥ 5000MΩ
零点平衡 Zero Balance	± 1% F.S
推荐工作电压 Recommended Excitation	10V(DC)
最大工作电压 Maximum Excitation	15V DC
其它 Else	
材质 Construction	合金钢 Alloy steel
电缆长度 Cable Length	3M 5M
密封等级 Protection Class	IP67
引用标准 Citation	GB/T7551-2008 OIMLR60
接线方式 Mode Of Connection	输入 + 红 Input+:Red 输入 - 黑 Input-:Black 输出 + 绿 Output+:Green 输出 - 白 Output-:White